



# **WIRELESS 300N DUAL BAND USB 2.0 ADAPTER**



**Quick Installation Guide  
DN-70550**

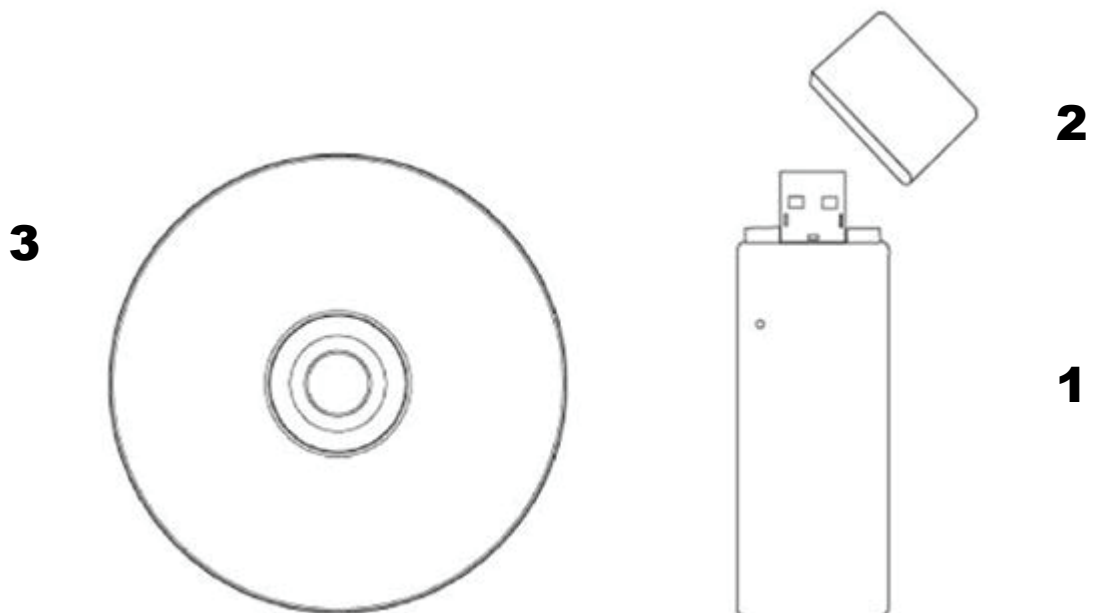
# Table of Contents

<b>Package Contents</b> .....	<b>Page 1</b>
<b>Network Card Installation</b> .....	<b>Page 2</b>
<b>Connect to Wireless Access Point</b> .....	<b>Page 5</b>

## ***Package Contents***

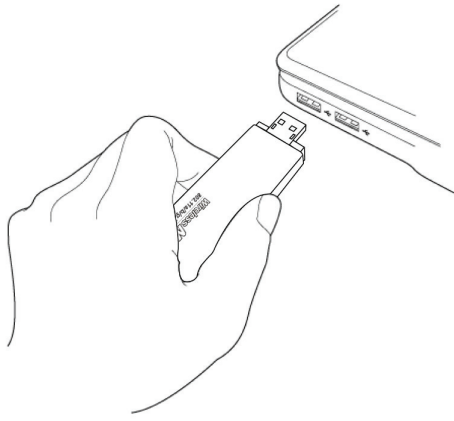
Before you starting to use this wireless network card, please check if there's anything missing in the package, and contact your dealer of purchase to claim for missing items:

- USB Wireless Network Card (1 pcs) 1
- Protection Cap (1 pcs) 2
- Driver/Utility/User Manual CD-ROM (1 pcs) 3



## Network Card Installation

Please follow the following instructions to install your new USB wireless network card.

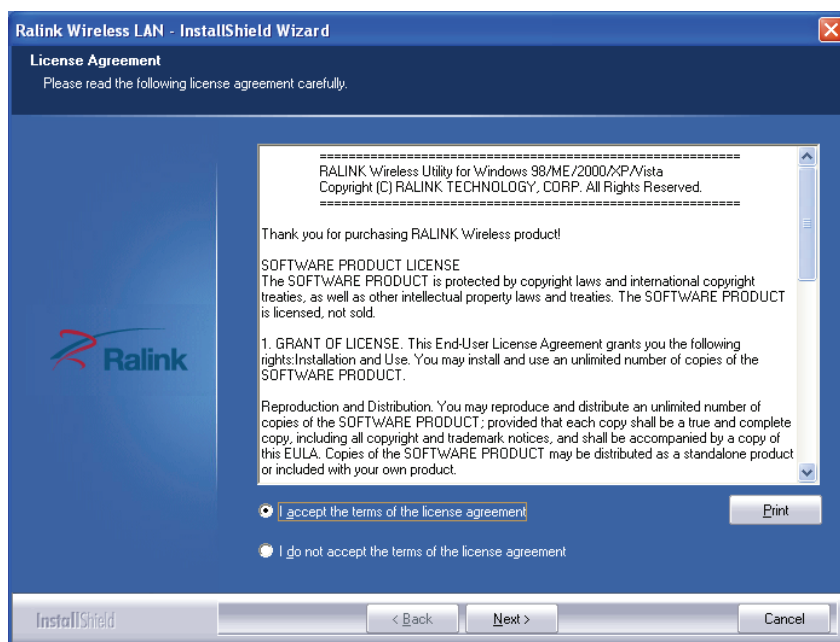


1. Insert the USB wireless network card into an empty USB 2.0 port of your computer when computer is switched on.

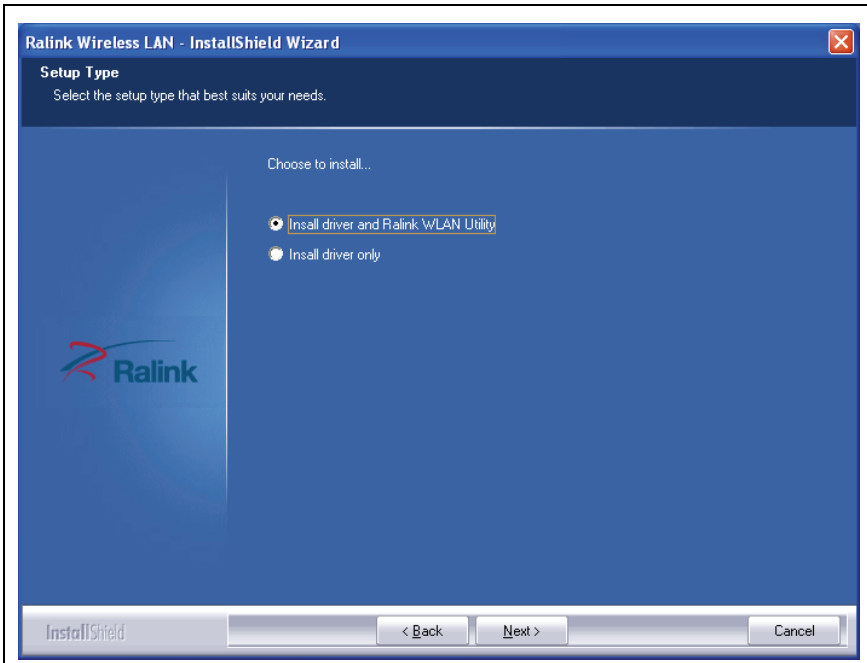
Never use force to insert the card, if you feel it's stuck, flip the card over and try again.



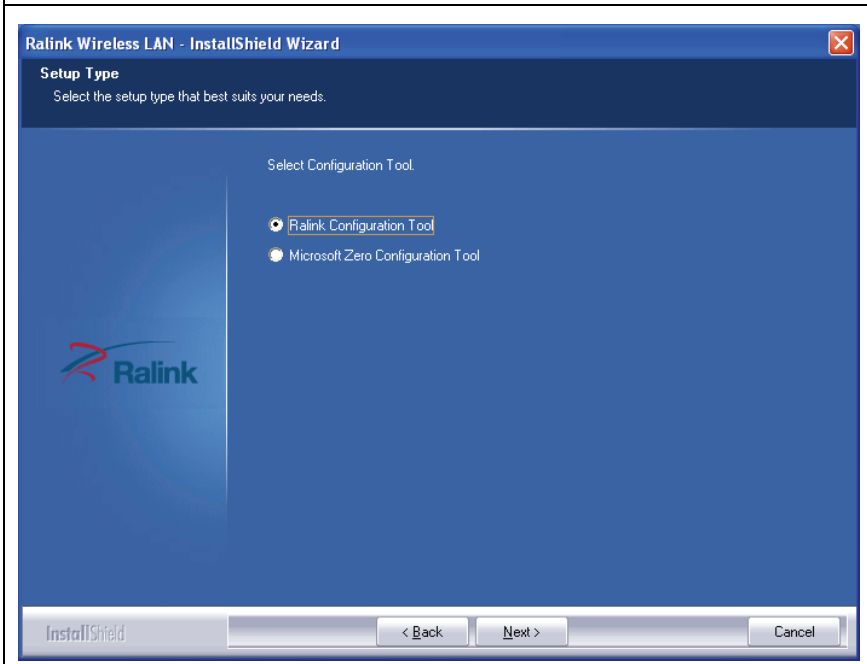
2. The following message will appear on your computer, click 'Cancel'.



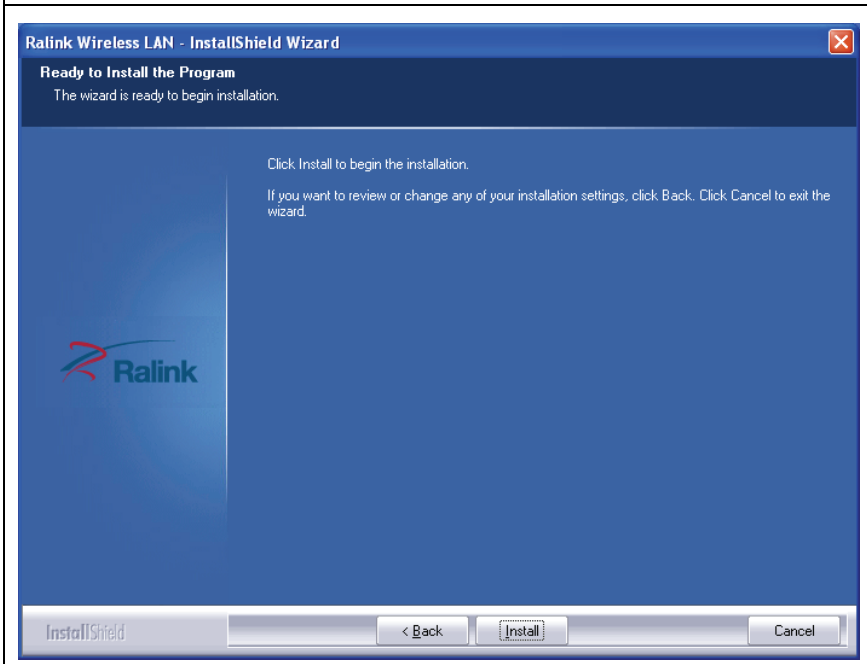
3. Insert device driver CDROM into the CD/DVD ROM drive of your computer, and execute 'Setup.exe' program. Please read the end user license agreement and click 'I accept the terms of the license agreement' and 'Next' to accept license agreement.



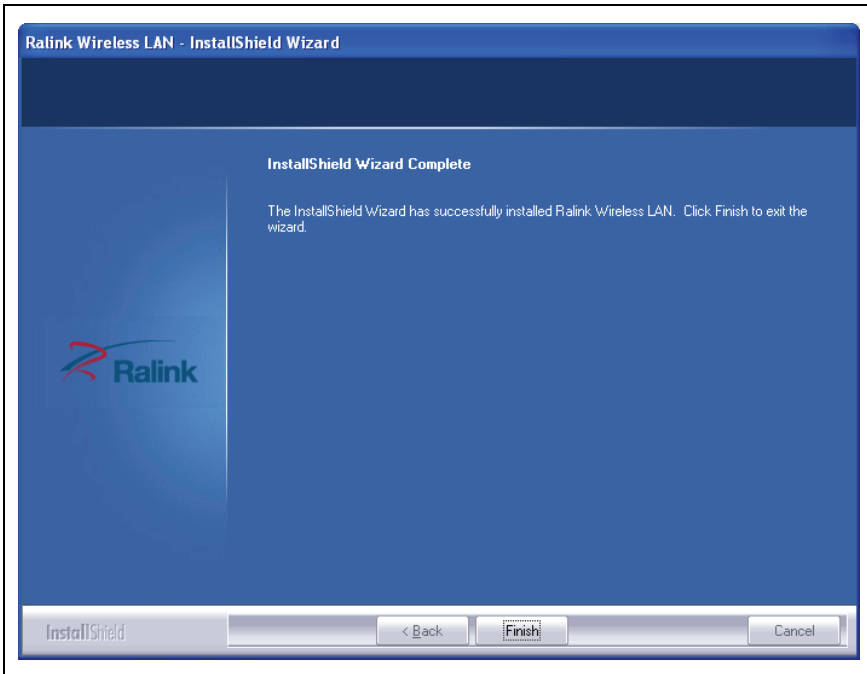
4. It is recommend installing driver and utility if the network card is installing the first time. If you want to update the driver only, choose 'Install driver only'. Click 'Next' to continue.



5. You can choose the configuration tool used to configure the wireless network card here. It's recommended to select 'Ralink Configuration Tool', which provides fully access to all functions of this wireless network card. If you prefer to use the wireless configuration tool provided by Windows XP, Vista or 7, please select 'Microsoft Zero Configuration Tool' then click 'Next'.



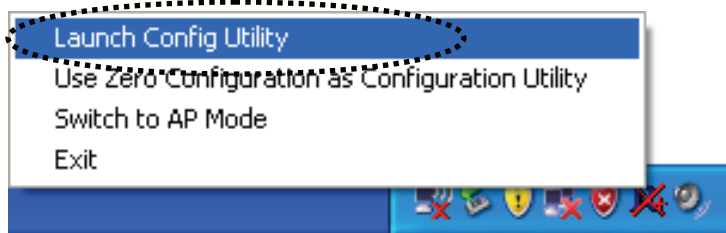
6. Now you'll see the following message, please click 'Install' to begin the installation. **If you see 'Found New Hardware' message again, please ignore it and wait.**



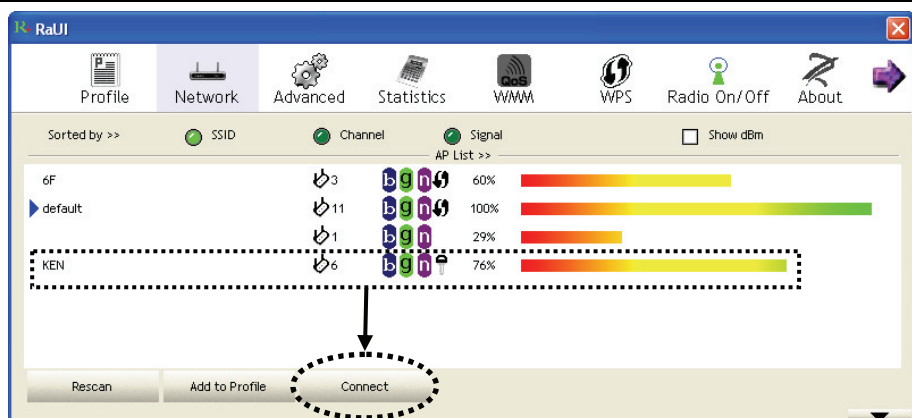
7. Please wait while the install procedure is running. When you see this message, please click 'Finish' to complete the installation process.

## Connect to Wireless Access Point

Using Configuration Utility to Connect to Wireless Access Point:



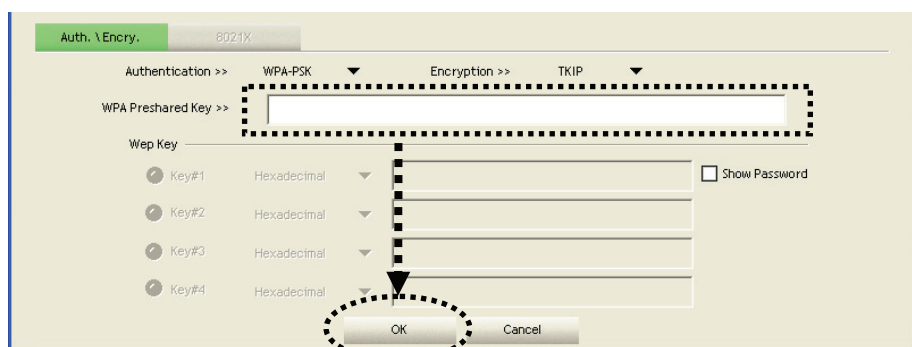
1. After installation is complete, wireless configuration utility will be shown in the desktop of your computer automatically. You will also see an icon at the lower-right corner of your windows system. You can click the icon by right mouse key, and select the configuration utility you want to use or switch the network card to AP mode.



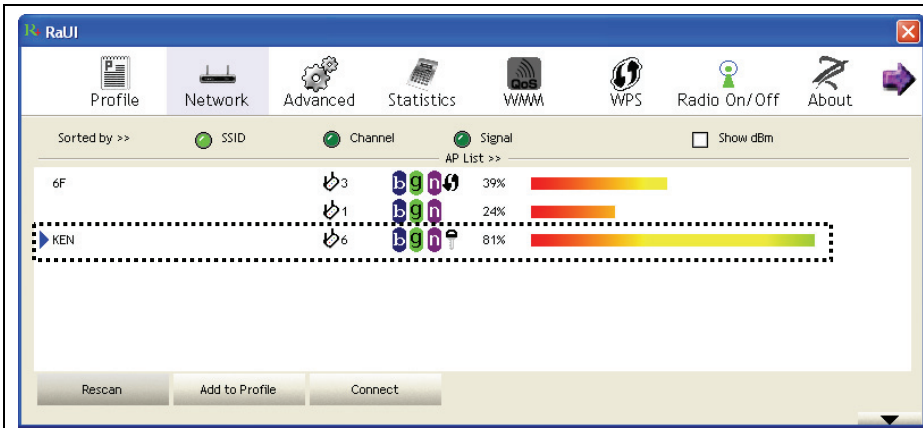
2. Configuration utility will scan for wireless access points and access to any unencrypted wireless access point automatically. If you wish to connect to another access point, select the access point and click 'Connect'.

If the wireless access point you want to connect does not show here, please click 'Rescan'.

NOTE: In Vista, the network card will not connect to any unencrypted wireless access point automatically.



3. If the wireless access point uses encryption, you have to input WEP key or WPA preshared key. Please ask the owner of the wireless access point you want to connect and input the correct key here, and then click 'OK'. If the value you inputted here is wrong, you will not be able to connect to wireless access point.



4. If the wireless access point is successfully connected, you'll see a blue arrow symbol appears in front of the name of wireless device.

For advanced settings and other features of this USB wireless network card, please refer to user manual enclosed in supplied CD-ROM.

